



# Data Sheet

Version 1.0: 2023-07-27

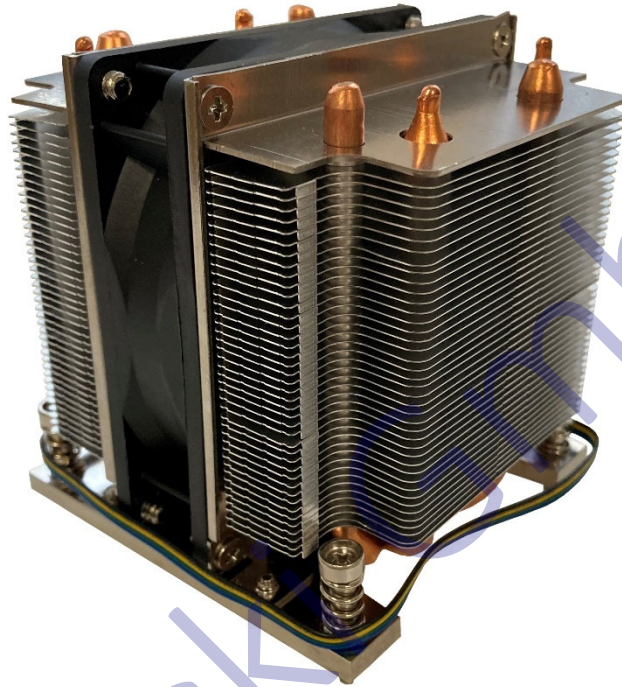
HSM Zamecki GmbH  
Robert-Lück-Straße 1  
D-12169 Berlin  
[www.hsmz.eu](http://www.hsmz.eu)

Phone: +49 30 797 497 010  
Fax: +49 30 797 497 029  
Mail: [sales@hsmz.eu](mailto:sales@hsmz.eu)

© 2023 HSM Zamecki GmbH. All rights reserved.

# S3SA-DSD1-E121Z

HSM Part# 104977



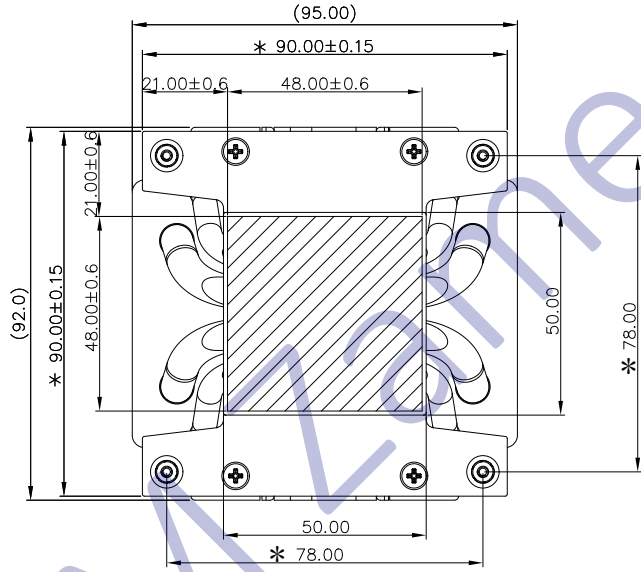
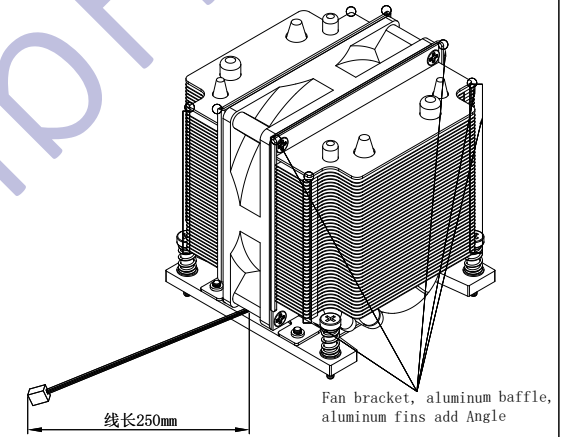
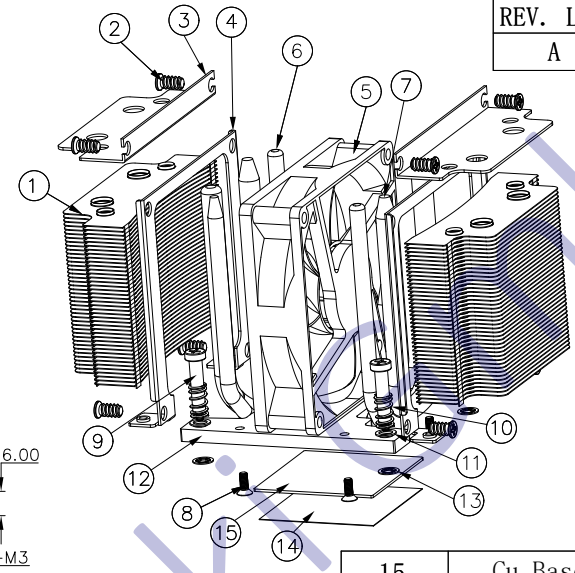
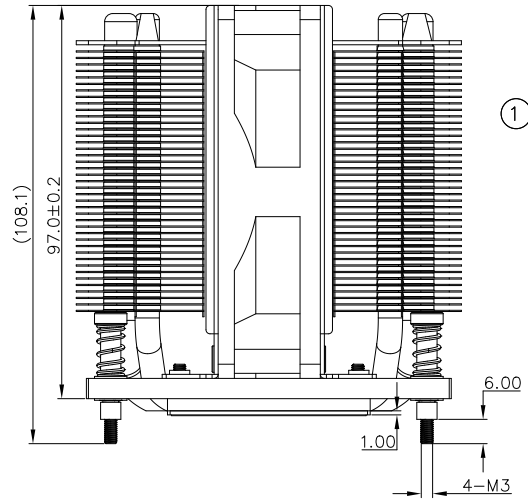
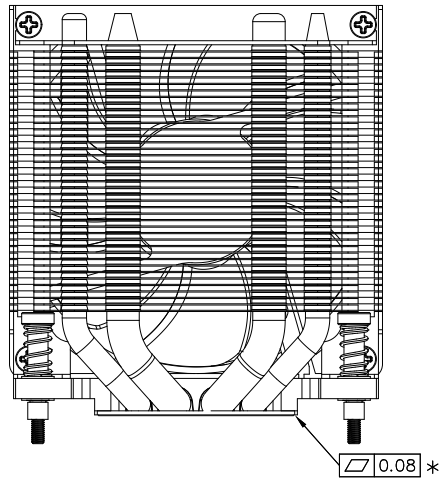
## Application

3U active Aluminum Heatsink with 4 Heatpipes for Alder Lake

## Specification

Socket Type	Socket LGA1700
Heat Sink Material	Aluminum with copper base and 4 heatpipes
Fastener	Screw + Spring
Fan Part Number / Bearing	F129025BUAF4Q8aR / two ball bearing
Fan Speed / Air Flow / Noise Level	800-3.450 rpm / 16.29-70.24 CFM / 21-43 dB-A
PWM / Smart Fan / Standard	PWM
Dimensions overall / Weight	95L x 92W x 103H (mm) / 457g
Thermal Resistance	$R_{th} = 0.152^{\circ}\text{C}/\text{W}$
Thermal Material	X23-7762
RoHS 2 and REACH compliant	Yes

版本 REV. LTR	日期 DATE	变更依据 REV. ORIGINOR	客户版本 CUSTOMER REV.
A	2023/7/27	Formal Release	A



15	Cu Base	YW-23-012-04	1	CU1100
14	Grease	602-60008	0.65g	7762
13	O-ring	YW-23-012-14	4	∅9.0*0.7
12	Al Base	YW-23-012-01	1	AL6063
11	Washer	YW-23-012-15	4	0.3
10	Spring	YW-23-012-13	4	∅7.2*1.1
9	Screw3	YW-23-012-12	4	M3
8	Screw2	YW-23-012-11	4	M3
7	HP-∅8	YW-23-012-06	2	CU1100
6	HP-∅6	YW-23-012-05	2	CU1100
5	Fan	YW-23-012-07	1	F129025BUAF4Q8aR
4	Clip2	YW-23-012-09	2	AL1100
3	Clip1	YW-23-012-08	2	AL1100
2	Screw1	YW-23-012-10	8	M5
1	Heatsink	YW-23-012-01	2	AL1100
Item	Part Name	Part No.	QTY.	Remarks

NOTE:  
 1. The surface of the product must not be crushed  
 表面不可有压伤  
 2. There shall be no stolen goods on the surface of the welding,  
 and there shall be no virtual welding phenomono  
 焊接时表面不可有脏物, 不可有虚焊现象  
 3. No advantageous edges and corners, all sides  
 and corners must comply with UL1439 safety specifications  
 不可有利边利角, 所有边角需符合UL1439安全规范  
 4. With \*is the accent size  
 带\*为重点尺寸

		比例 SCALE	1:1	单位 UNIT	mm	页次 SHEET	1/1	HSM (104977)
		版次 NO. REV.		A		客户 CUSTOMER		
.X°	±1.0°	核准 APPROVED		材料 MAT.	②	变更编号 EC NO.		
X.	±0.20	审核 CHECKED		表面处理 SUR. TT	②	料号 PART NO.	YW-23-012	
.X	±0.15	制图 DRAWN		日期 TIME	2023/07/27	品名 NAME	Heatsink Assy	
.XX	±0.10							



# EVERFLOW

## SPECIFICATION FOR APPROVAL

**CUSTOMER:** 运宏

**DESCRIPTION:** DC Fan

**EVERFLOW No:** F129025BUAF4Q8aR

**CUSTOMER No:**

**SAMPLE NO:**

**SERIAL NUMBER:** 116147

**DATE:** 2019/7/10

**RD REV:** A

**STANDARD REV:** A

CUSTOMER APPROVED BY

APPROVED BY	CHECKED BY	DRAWING BY
		<i>Kun Zhu</i>

EVERFLOW PRECISION ELECTRONIC(DONGGUAN) CO., LTD.  
GEKENG YANJIANG INDUSTRIAL ZONE, HENG LI TOWN, DONG  
GUAN CITY, GUANG DONG.

TEL: 86-0769-83796589 83796590  
FAX:86-0769-83797588 83727163

<http://www.everflowtech.com>

## SPECIFICATION FOR APPROVAL

### ★ 1. SCOPE:

**THIS SPECIFICATION DEFINES THE ELECTRICAL AND MECHANICAL CHARACTERISTICS OF THE DC BRUSHLESS AXIAL FLOW AND BLOWER FAN.**

### ★ 2. CHARACTERS:

NO	ITEM	SPECIFICATION
2--1	Rated Voltage	<input type="checkbox"/> 5V <input checked="" type="checkbox"/> 12V <input type="checkbox"/> 24V <input type="checkbox"/> 48V
2--2	Starting Voltage	N/A
2--3	Operating Voltage Range	11.4V~12.6V
2--4	Rated Current	0.50Amp (MAX.0.50Amp) <span style="float: right;">Duty cycle =100%</span> 0.10Amp(MAX) <span style="float: right;">Duty cycle =0~30%</span>
2--5	Rated Power	6.00W (MAX.6.0W) <span style="float: right;">Duty cycle =100%</span> 1.20W(MAX) <span style="float: right;">Duty cycle =0~30%</span>
2--6	Rated Speed	3450±10% RPM <span style="float: right;">Duty cycle =100%</span> 800±300 RPM <span style="float: right;">Duty cycle =0~30%</span> (Testing Speed After Continuous 3Minute Operation At Ambient Temperature Of 25°C)
2--7	Air Flow	70.24 CFM 1.99m3/min <span style="float: right;">Duty cycle =100%</span> 16.29 CFM 0.46m3/min <span style="float: right;">Duty cycle =0~30%</span>
2--8	Static Pressure	5.98 mmH2O <span style="float: right;">Duty cycle =100%</span> 0.32 mmH2O <span style="float: right;">Duty cycle =0~30%</span>
2--9	Sound Level	MAX.43 dB(A) <span style="float: right;">Duty cycle =100%</span> MAX.21 dB(A) <span style="float: right;">Duty cycle =0~30%</span>
2--10	Product Type	<input checked="" type="checkbox"/> Rohs <input type="checkbox"/> HF <input type="checkbox"/> GP
2--11	Life Expectancy	<input type="checkbox"/> 40,000hours at 40°C <input checked="" type="checkbox"/> 50,000hours at 40°C (WITH 15~65% RH)
2--12	Bearing Type	<input checked="" type="checkbox"/> Two Ball <input type="checkbox"/> Ball And Sleeve <input type="checkbox"/> EBR <input type="checkbox"/> Ball Bearing <input type="checkbox"/> One Ball
2--13	Protection	<input type="checkbox"/> Impedance Protection <input checked="" type="checkbox"/> Auto-Restart <input type="checkbox"/> Current-Limit
2--14	Pole	<input type="checkbox"/> 2 Pole <input checked="" type="checkbox"/> 4Pole <input type="checkbox"/> 8Pole <input type="checkbox"/> Three Phase
2--15	IP Grade	N/A
2--16	Safety Approval	<input checked="" type="checkbox"/> TUV <input checked="" type="checkbox"/> UL <input checked="" type="checkbox"/> CE



**SPECIFICATION FOR APPROVAL**

**★ 3. MECHANICAL:**

3--1	DIMENSIONS	SEE DIMENSIONS DRAWING
3--2	FRAME	<input checked="" type="checkbox"/> PBT(BLACK) PLASTIC {UL 94V-0} <input type="checkbox"/> PC PLASTIC {UL 94V-2}
3--3	IMPELLER	<input checked="" type="checkbox"/> PBT(BLACK) PLASTIC {UL 94V-0} <input type="checkbox"/> PC PLASTIC {UL 94V-2}
3--4	WEIGHT	94 GRAMS (REF)

**★ 4. ENVIRONMENTAL:**

4--1. OPERATING TEMPERATURE----- -10°C~70°C

4--2. STORAGE TEMPERATURE----- -20°C~75°C

4-3. OPERATING HUMIDITY----- 5 TO 90% RH

4-4. STORAGE HUMIDITY ----- 5 TO 95% RH

4-5. DIRECTION OF ROTATION----- CLOCKWISE  
COUNTER-CLOCKWISE  
 (VIEWED FROM LABEL SIDE)

4-6. DIELECTRIC STRENGTH ----- APPLIED AC 500V FOR ONE MINUTE OR  
 AC 600V FOR SECONDS BETWEEN HOUSING  
 AND LEAD WIRE(+)

4-7. INSULATION STRENGTH-----MORE THAN 500 M OHM INTERNAL STATOR  
 AND LEAD WIRE(+) MEASURED AT DC 500V

4- 8. DROP TEST-----IN MINIMUM PACKAGING CONDITION, FAN WITHSTANDS  
 EACH ONE DROP OF THREE FACES FROM 60cm DISTANCE  
 HEIGHT ON TO 2cm THICKNESS OF SOLEPLATE.



**SPECIFICATION FOR APPROVAL**

**4--9. VIBRATION TEST----- ORIENTATION: X , Y , Z .**  
**FREQUENCY(Hz) PSD (g<sup>2</sup>/Hz)**  
**5            0.02**  
**500        0.0001**  
**TEST TIME:2HRS FOR EACH DIRECTION.**

**4--10. SHOCK TEST----- TEMPERATURE : +25°c.**  
**ORIENTATION : X , Y , Z .**  
**POWER : NON-OPERATING.,**  
**ACCELERATION: 50G MAX.**  
**PULSE: 11 MS HALF-SINE WAVE.**  
**NUMBER OF SHOCKS:**  
**5 SHOCKS FOR EACH DIRECTION.**

**4--11. NOISE TEST ----- MEASURED IN A SEMI-ANECHOIC CHAMBER**  
**WITH BACKGROUND NOISE LEVEL BELOW**  
**19DB(A). THE FAN IS RUNING IN FREE AIR**  
**WITH THE MICROPHONE AT A DISTANCE OF**  
**ONE METER FRAM THE FAN INTAKE**

**4--12. AIR PERFORMANCE ----- MEASURED BY A DOUBLE CHAMBER.THE**  
**VALUES ARE RECORDED WHEN THE FAN SPEED**  
**HAS STABILIZED AT RATED VOLTAGE.**

**★ 5. NOTES:**

**5--1. THE ABOVE STANDARD SHOULD BE THE SPECIFIED VALUE AT NORMAL**  
**TEMPERATURE (25°C) AND NORMAL HUMIDITY (60~65%) UNLESS**  
**OTHERWISE NOTICED.**

**5--2. SPECIFICATION CHANGE:**  
**ANY CHANGES TO THE PARAMETERS SPECIFIED IN THIS DOCUMENT WILL BE**  
**DETERMINED BY MUTUAL AGREEMENT ON BOTH PARTIES.**

**5--3. IT IS VERY IMPORTANT TO CHECK THE POLARITY CORRECTLY BEFORE CONNECTING**  
**THE ANSTO THE POWER SOURCE. POSITIVE (+) AND NEGATIVE (-). DAMGE MAY**  
**BECAUSED TO THE FANS IF CONNECTION IS WITH REVERSE POLARITY, IF THERE IS**  
**NO FOOLPROOF METHOD TO PROTECT AGAINST SUCH ERROR SPECIFICALLY**  
**MENTIONED IN THIS SPEC.**





## SPECIFICATION FOR APPROVAL

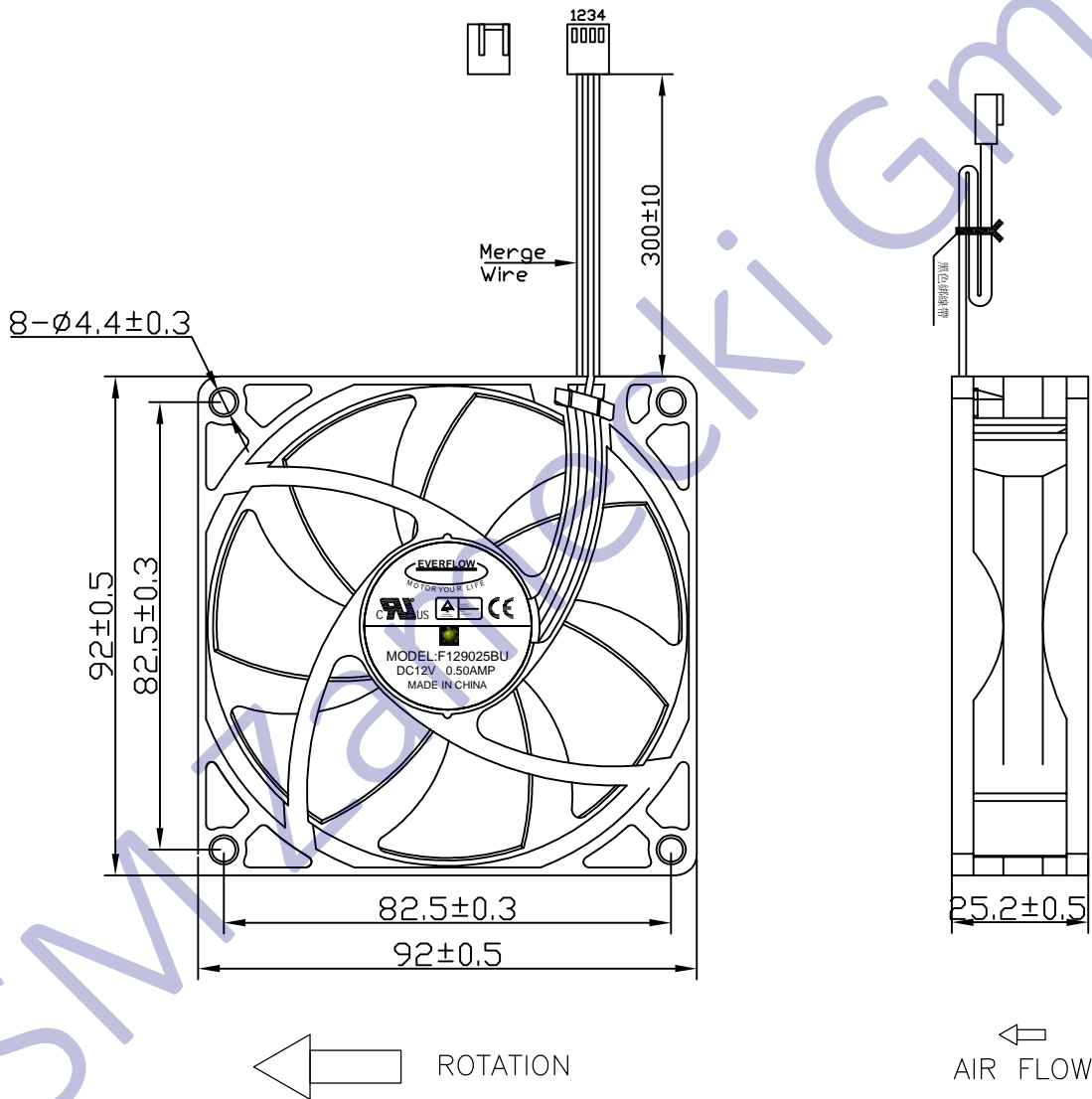
- 5--4. PLEASE BE CAUTIOUS WHEN MOUNTING THE FAN THE FAN. INCORRECT MOUNTING OF FANS MAY CAUSE EXCESS RESONANCE, VIBRATION AND SUBSEQUENT NOISE, EVEN SCREW HOLE BROKEN.
- 5--5. PLEASE EXERCISE CAUTION WHEN HANDLING FANS. DAMAGE MAY BE CAUSED BY OUTSIDE ABNORMAL PRESSURE OR ENVIRONMENT STRESS DURING MOVING.
- 5--6. ALL THE FANS SHALL MEET THE QUALITY INSPECTION UNDER SAMPLING PLAN MIL-STD-105E AS FOLLOW, EXCEPT AS PERTAINS TO SOME SPECIAL,DESIGNS , THERE IS NO GUARANTEE THAT THE PRODUCTS WILL BE FREE FROM ANY SUCH SAFETY PROBLEMS OR FAILURES AS CASSED BY THE INVADING OF POWDER, DROP LOTS OF WATER OR ENCROACHMENT OF INSECT INTO THE HUB.
- |          |       |
|----------|-------|
| CRITICAL | 0.25% |
| MAJOR    | 1.00% |
| MINOR    | 2.50% |
- 5--7. CUSTOMER SHALL CONFIRM THE MATCHING AND RELIABILITY OF FAN ON ACTUAL SET OR UNIT APPLICATION.THIS INCLUDE CONFIRMATION ON SET OR UNIT LIFE, ELECTRICAL NOISE, MECHANICAL NOISE, VIBRATION, STATIC ELECTRICITY, ELECTRIC POWER NOISE, DRIFT,ELECTRIC RESONANCE BETWEEN MOTOR AND CONTROL CIRCUIT, MECHANICAL RESONANCE BETWEEN MOTOR AND CHASSIS, IRREGULAR MOVEMENT OF SET DUE TO MOTOR NOISE, IRREGULAR MOVEMENT OF SET INSTRONG ELECTROMAGNETIC FIELD, DAMAGED BY LIGHTNING SURGE EARTHING METHOD ETC.
- 5--7. ANY REVISIONS ON THE SPECIFICATION SHALL BE DONE BASED ON MUTUAL DISCUSSION AND AGREEMENT.
- 5--8. IN ORDER TO IMPROVE THE PERFORMANCE WITHIN THE SCOPE OF SPECIFICATION, PARTS OR MATERIAL CHANGES ARE SUBJECT TO PRIOR NOTICE TO CUSTOMER.
- 5--9. ANY ITEM WHICH IS NEEDED TO ADD INTO SPECIFICATION SHALL BE DETERMINED ON CUSTOMER'S PRIOR WRITTEN REQUEST. IF NO INFORMATION GIVEN, FAN WILL BE DELIVERED BASED ON OUR STANDARD JUDGMENT.
- 5--10. WHEN ANY TROUBLE OCCURS, BOTH PARTIES SHALL DISCUSS ON THIS SPECIFICATION TO SOLVE THE MATTERS. IN THIS CASE, OUR GUARANTEE IS ONLY LIMITED TO FANS.



REVISES  
A

F129025BUAF4Q8aR

★ 6. DIMENSION DRAWING. UNIT: mm

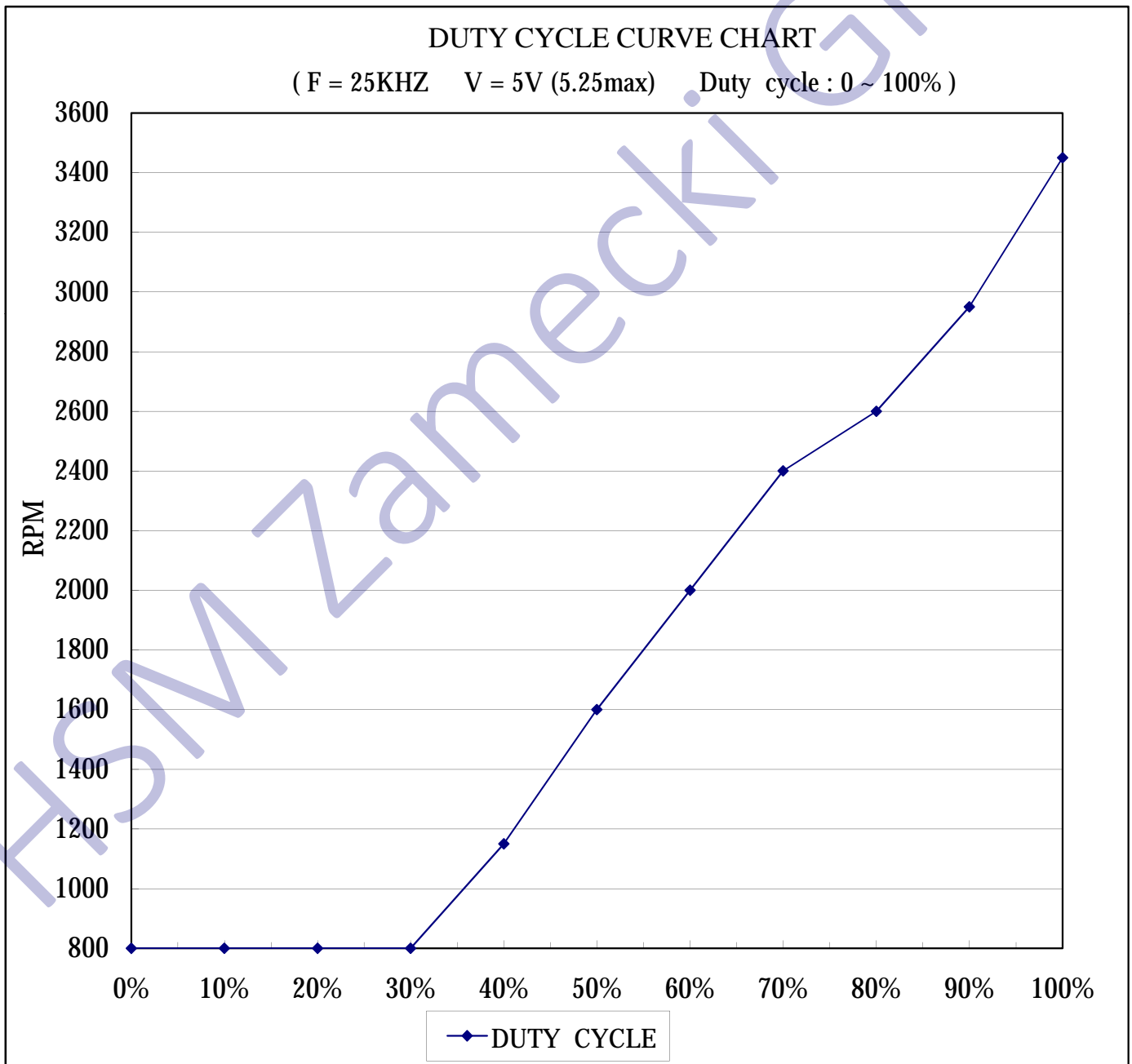


NOTES:

- LEAD WIRE UL 1061 AWG#26  
 PIN 1: BLACK WIRE---(-)  
 PIN 2: YELLOW WIRE---(+)  
 PIN 3: GREEN WIRE---(SIGNAL)  
 PIN 4: BLUE WIRE---(PWM INPUT)
- HOUSING: 2543-4P .2510-4P (RICE WHITE) OR EQUIVALENT
- EXPOSED WIRE LENGHT:  $300 \pm 10$ mm

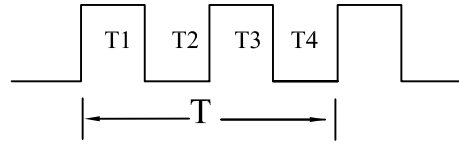
**★ 7. DUTY CYCLE CURVE CHART**

DUTY CYCLE	SPEED (RPM)	RANGE	CURRENT
0~30%	800	±300	<0.10A
100%	3450	±10%	<0.50A



## ★ 7. CHARACTERISTICS & DEFINITION

- 4 Pole Motor: Fan with 4 pole motor.



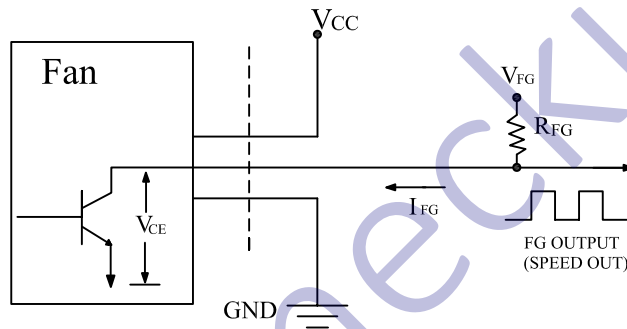
1 Rotation = T

$T = T_1 + T_2 + T_3 + T_4 = 1 \text{ Rotation}$

$T_1 = T_2 = T_3 = T_4 = \frac{60}{4 \times \text{r.p.m}} \text{ Sec}$

- FG(Frequency Generator)Signal External Circuit:

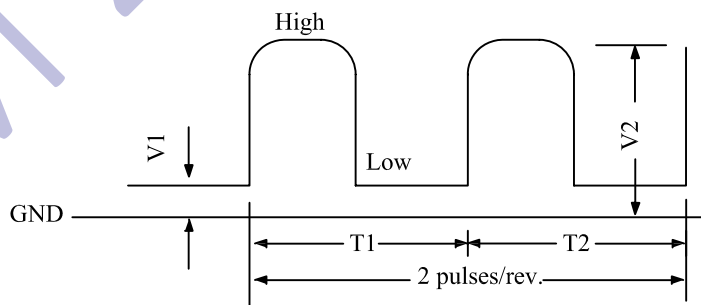
Open-collector output for rotation frequency detection



Note: Max.  $V_{FG} = 13.2 \text{ VDC}$ , Max.  $I_{FG} = 5 \text{ mA}$ ,  $\implies R_{FG} \geq V_{FG} / I_{FG}$   
We Recommend  $R_{FG} = 10 \text{ K}\Omega$

- FG(Frequency Generator)Type Output Waveform:

1. Motor Rotating Condition (at  $25^\circ \text{C}$ ,  $V = 5 \text{ VDC}$ )



V1: within 0.7V when  $I_{FG}$  less Than 3mA

V2:  $V_{FG}$ , FG signal output voltage, maximum rating: 13.2VDC

Duty =  $T_1 / (T_1 + T_2) \times 100 = 50 \pm 20\%$  (measured between  $0.3 \times V_2 \sim 0.7 \times V_2$ )

V1 - V2 rise time: less than 1.0ms

V2 - V1 fall time: less than 1.0ms

Rotation Speed (RPM) =  $(60/2) \times f_{FG} = 30 \times f_{FG}$

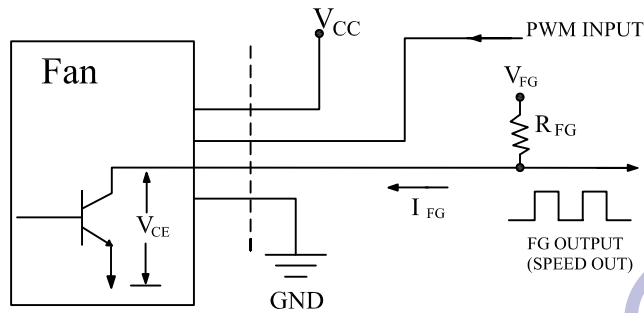
$f_{FG}$ : frequency of FG output waveform (Hz)

2. Motor locked condition (at  $V_{cc} = 12 \text{ VDC}$ )

Output is fixed at low or high when motor is locked.

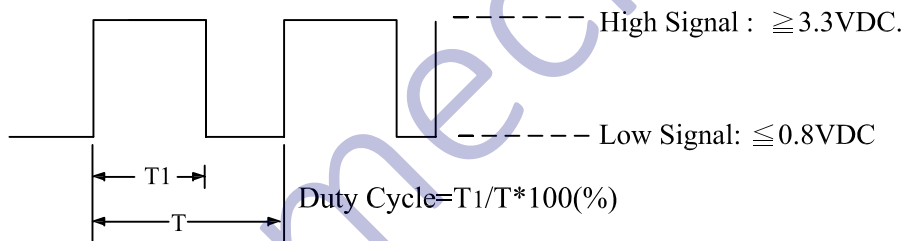
## ★ 9. CHARACTERISTICS & DEFINITION

- PWM Circuit:(for reference)



- PWM Control Signal Input:

Signal Voltage Range :DC 0V ~5.5V ( $V = 5V$ )



- 1.The 25KHz operating frequency(customer preferred)has been tested and checked.
- 2.At 100% duty cycle, The fan will operate at maximum speed.
- 3.The fan will default to operate at maximum speed when the speed control input(PWM input)is left unconnected.

# Zertifikat

# Certificate



Zertifikat Nr. *Certificate No.*  
R 50263954

Blatt *Page*  
0005

<i>Ihr Zeichen Client Reference</i>	<i>Unser Zeichen Our Reference</i>	<i>Ausstellungsdatum</i>	<i>Date of Issue</i> (day/mo/yr)
L.C.X.	02-YECRYSTAL- 17033912 002	15.12.2015	

**Genehmigungsinhaber *License Holder***  
Everflow Precision Electronic  
(Dong Guan) Co., Ltd.  
GeKeng Industrial Zone  
Heng Li Town  
Dongguan City, Guangdong 523460  
P.R. China

**Fertigungsstätte *Manufacturing Plant***  
Everflow Precision Electronic  
(Dong Guan) Co., Ltd.  
GeKeng Industrial Zone  
Heng Li Town  
Dongguan City, Guangdong 523460  
P.R. China

**Prüfzeichen *Test Mark***



Type Approved  
Safety  
Regular Production  
Surveillance

www.tuv.com  
ID 2000000000

**Geprüft nach *Tested acc. to***

EN 60950-1:2006+A11+A1+A12+A2

**Zertifiziertes Produkt (Geräteidentifikation)  
*Certified Product (Product Identification)***

**Lizenzentgelte - Einheit  
*License Fee - Unit***

Fan (DC Fan)

as pages 0001-0004

Change

Test requirement : see above

Dem Zertifikat liegt unsere Prüf- und Zertifizierungsordnung zugrunde und es bestätigt die Konformität des Produktes mit den oben genannten Standards und Prüfgrundlagen. Zusätzliche Anforderungen in Ländern, in denen das Produkt in Verkehr gebracht werden soll, müssen zusätzlich betrachtet werden. Die Herstellung des zertifizierten Produktes wird überwacht.  
This certificate is based on our Testing and Certification Regulation and states the conformity of the product with the standards and testing requirements as indicated above. Any additional requirements in countries where the product is going to be marketed have to be considered additionally. The manufacturing of the certified product is subject to surveillance.

**TÜV Rheinland LGA Products GmbH - Tillystraße 2 - 90431 Nürnberg**

Tel.: (+49/221)8 06 - 13 71 e-mail: cert-validity@de.tuv.com  
Fax: (+49/221)8 06 - 39 35 http://www.tuv.com/safety

Zertifizierungsstelle



Dipl.-Ing. Univ. S. O. Steinke

Everflow Precision Electronic (Dong  
Guan) Co., Ltd.  
Mr. Liu-Chun Xiang, Manager  
Engineering Dept.  
GeKeng Industrial Zone  
Heng Li Town  
Dongguan City, Guangdong 523460  
P.R. China

Date : 15.12.2015  
Our ref. : YECRYSTAL 02  
Your ref.: L.C.X.

**Ref : R TÜV-Mark Approval**

Type of Equipment : DC Fan  
Model Designation : See Certificate  
Certificate No. : R 50263954 0005  
Report No. : 17033912 002

Dear Mr. Liu-Chun Xiang,

The above specified technical equipment has been tested and found to be in accordance with the relevant requirements.

Enclosed you will find the certificate of approval.

If cancellation of the certificate is submitted by November 15 in a given year, no fee will be charged for the following year.

We appreciate your kind support and would like to offer our assistance and continuous services in the future.

Please contact our office for approval of your new products.

With kind regards,  
Certification Body

Dipl.-Ing. Univ. S. O. Steinke

Enclosure

证书的详细资料请登陆[www.tuvdotcom.com](http://www.tuvdotcom.com)查阅,或拨打我司客服热线800 999 3668 / 400 883 1300咨询

Model list and differences							
Model	Input Rating		Winding $\Phi$ (mm)	Turns (T)	Speed (RPM)	PWB code	IC type
	V	A					
(A)129025(C)L(E)	12	0.25	0.17	140	3000	8025-P41A	EF11961
(A)129025(C)M(E)	12	0.30	0.19	120	3400		
(A)129025(C)H(E)	12	0.40	0.20	97	3800		
(A)129025(C)U(E)	12	0.50	0.22	95	4200		
(A)128038(C)L(2)	12	0.4	0.31	88	4800	12025-P23	LB11867FV
(A)128038(C)M(2)	12	0.6	0.36	67	5800		
(A)128038(C)H(2)	12	0.8	0.30	52	6800		
(A)128038(C)U(2)	12	1.2	0.36	42	7800		
(A)128015(C)L	12	0.19	0.10	240	2400	8025-P22B	LB11961
(A)128015(C)M	12	0.25	0.12	190	3000		
(A)128015(C)H	12	0.32	0.14	140	3600		
(A)128015(C)U	12	0.50	0.16	118	4200		
(A)124028(C)L(2)	12	0.15	0.15	88	6000	4056-A11	LB11660F
(A)124028(C)M(2)	12	0.38	0.18	59	10000		
(A)124028(C)H(2)	12	0.65	0.25	31	14000		
(A)124028(C)U(2)	12	0.90	0.30	24	18000		



NOTICE OF COMPLETION  
AND  
AUTHORIZATION TO APPLY THE UL MARK



2013-08-22

Everflow Precision Electronic (dong Guan) Co Ltd  
Mr. Bin Tao  
Ge Keng Industrial Zone  
Heng Li Town  
Dongguan Guangdong 523460, Cn

Our Reference: File E236658, Vol. 1 Project Number 13CA39187  
Your Reference: TAO, BIN MR. 1-july-2013  
Project Scope: GPWV2/8 4 SERIES COMPONENT FAN 4028/8015/8038/9025 E236658

Dear Mr. Bin Tao:

Congratulations! UL's investigation of your product(s) has been completed under the above Reference Number and the product was determined to comply with the applicable requirements. This letter temporarily supplements the UL Follow-Up Services Procedure and serves as authorization to apply the UL Mark at authorized factories under UL's Follow-Up Service Program. To provide your manufacturer(s) with the intended authorization to use the UL Mark, you must send a copy of this notice to each manufacturing location currently authorized under File E236658, Vol. 1.

Records in the Follow-Up Services Procedure covering the product are now being prepared and will be sent in the near future. Until then, this letter authorizes application of the UL Mark for 90 days from the date indicated above.

Additional requirements related to your responsibilities as the Applicant can be found in the document "Applicant responsibilities related to Early Authorizations" that can be found at the following web-site:  
<http://www.ul.com/EAResponsibilities>

Any information and documentation provided to you involving UL Mark services are provided on behalf of UL LLC (UL) or any authorized licensee of UL.

We are excited you are now able to apply the UL Mark to your products and appreciate your business. Feel free to contact me or any of our Customer Service representatives if you have any questions.

Very truly yours,

Max Mai  
+86 20 3213 1311  
Engineer Project Associate  
Max.Mai@ul.com

Reviewed by:

William R. Carney  
847/664-1088  
Chief Engineer Director I  
William.R.Carney@ul.com

CC: DONGGUAN UTL CO LTD, MS. DANA TIAN

GUZ83EF-256549

## INDEX

Model/Product Number(s)	Section	Requirements Evaluated to (US and/or CN)
DC Fans, Models (A)241225(C)(D), (B)129215(C)(D), (A)128010(C)(D), (B)128010(C)(D), and (A)248015(C)(D) series, where (A) may be R or F; (B) may be T, K, or X; (C) may be X5, where X5 may be B, D, S, or EBR; and (D) may be L, M, H, or U.	13	USR/CNR
DC Fans, Models (A)(B)1817(C)L, where (A) may be R or F; (B) may be A or 05; (C) may be S, B, D or C.	14	USR/CNR
DC Fans, series (A)129025(C)(D)(E), (A)128038B(D)(2), (A)128015(C)(D) and (A)124028B(D)(2), Where (A) may be R, F, T represents screw hold on Frame, (C) may be S, D or B represents Bearing Type, (D) may be L, M, H or U represents Fan Speed, (E) may be (2), (3), (4), (5) or (6) represents different frames.	15	USR/CNR



Dongguan UTL Electronic Technology Co., Ltd.  
1F, Hengzheng Bldg, North Road of Station, Nancheng District,  
Dongguan, Guangdong, China

Certificate No.:

17PNE09087 10001

The following product has been tested by us with the listed standards and found in conformity with the council EMC directive 2014/30/EU. It is possible to use CE marking to demonstrate the conformity with this EMC Directive.

### Certificate of Conformity

**Applicant** : EVERFLOW PRECISION ELECTRONIC(DONG GUAN) CO., LTD.  
**Address** : Gekeng Industrial Zone, Heng Li Town, Dongguan City, Guangdong Province, China

**Manufacturer** : EVERFLOW PRECISION ELECTRONIC(DONG GUAN) CO., LTD.  
**Address** : Gekeng Industrial Zone, Heng Li Town, Dongguan City, Guangdong Province, China

**Factory** : EVERFLOW PRECISION ELECTRONIC(DONG GUAN) CO., LTD.  
**Address** : Gekeng Industrial Zone, Heng Li Town, Dongguan City, Guangdong Province, China

**Product** : DC FAN

**Trade Mark** : 

**Model(s)** : See Appendix pages.

**Technical Data** : See Appendix pages.

**Test Standards** : EN 55032: 2015  
EN 61000-3-2: 2014, EN 61000-3-3: 2013  
EN 55024: 2010  
EN 61000-4-2: 2009, EN 61000-4-3: 2006+A2: 2010,  
EN 61000-4-4: 2012, EN 61000-4-5: 2006,  
EN 61000-4-6: 2014, EN 61000-4-11: 2004

**Report No** : 17PNE09087 10001



Sep. 25, 2017

The certificate is based on a single evaluation of one sample of above-mentioned products. It does not imply an assessment of the whole production and does not permit the use of the test lab. logo.

CBTL No.: TL459 For detailed information, please click <http://www.iecee.org>

CNAS No.: L5998 For detailed information, please click <http://www.cnas.org.cn>

[www.gdutl.com](http://www.gdutl.com) E-mail: [sales@gdutl.com](mailto:sales@gdutl.com)

## Certificate of Conformity No.: 17PNE09087 10001

### Model Details:

No.	Series	Model No.	Voltage	Current	Speed
			(V)	(AMP)	(RPM)
1	4028 Series	(A)124028(C)L(2)	12	0.15	6000
		(A)124028(C)M(2)		0.38	10000
		(A)124028(C)H(2)		0.65	14000
		(A)124028(C)U(2)		0.90	18000
2	8015 Series	(A)128015(C)L	12	0.19	2400
		(A)128015(C)M		0.25	3000
		(A)128015(C)H		0.32	3600
		(A)128015(C)U		0.50	4200
3	8038 Series	(A)128038(C)L(2)	12	0.4	4800
		(A)128038(C)M(2)		0.6	5800
		(A)128038(C)H(2)		0.8	6800
		(A)128038(C)U(2)		1.2	7800
4	9025 Series	(A)129025(C)L(E)	12	0.25	3000
		(A)129025(C)M(E)		0.3	3400
		(A)129025(C)H(E)		0.4	3800
		(A)129025(C)U(E)		0.5	4200

**Notes:**

Where (A) may be R, F or T represents Frame Type

R = Four screw holes

**F = Eight screw holes**

T = Three screw holes

(C) may be S, D or B represents Bearing Type

**B = Ball bearing**

D = One ball and one Sleeve bearing

S = Sleeve bearing

(D) may be L, M, H or U represents Fan Speed

L = Low Speed

M = Medium Speed

H = High Speed

U = Ultra High Speed

(E) may be **(2)**, (3), (4), (5) or (6) represents different frame

---End of the appendix---